



**HLUMANI**

# HlUMANi Community Center

Made by and for the Khayelitshan farmers

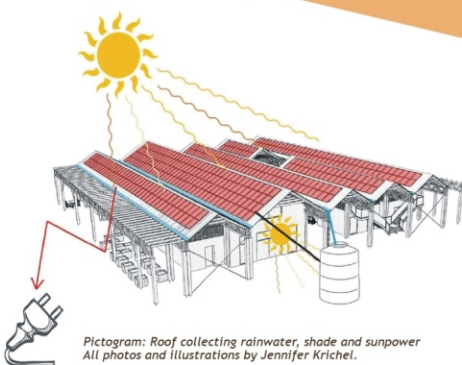


## Sustainability and community in focus

The holistic approach of HlUMANi in alignment with the UN Sustainable Development Goals



Environmentally friendly and recycled materials will be used. The complex will also use solar energy and collect and treat rainwater, further ensuring sustainability and removing dependence on the unstable water and electricity supply.



Pictogram: Roof collecting rainwater, shade and sunpower  
All photos and illustrations by Jennifer Krichel.

## Filling the gaps in resources

HlUMANi is a meeting place for the community, which is converted weekly into a packing station and selling space. It aims to strengthen connections between local vendors and farmers, while allowing for employment and training opportunities.



Pictured: The women of Maya We Khaya Community Garden with architect student

## Our Story

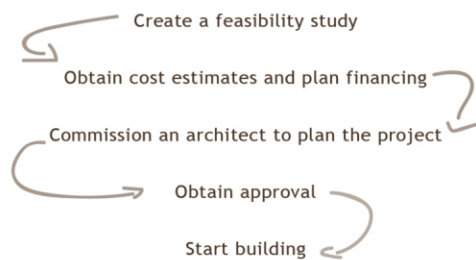
The idea behind the HlUMANi Community Center came to life through local farmers visions for their community. HlUMANi, a Xhosa word meaning "to grow", was then further developed with the help of Jennifer Krichel, a German Architecture student.

The idea behind the community center has been kept alive in different forms for over a decade. It has taken its final form after workshops with the Khayelitshan farmers and community, filling the gaps in resources to allow for the growth of local farming, employment, and connectivity.

All photos and illustrations by Jennifer Krichel.

## Next steps

Kindly consider supporting us in this process



Pictured: Location plan marked in red



## Contact Us

thehlumaniproject@gmail.com



Pictured: Model of HlUMANi

## What needs does HlUMANi fulfill?

- Multi-purpose room
- Storage and packing rooms
- Kitchen
- Office and care-taker's apartment
- Toilets and showers
- Guest houses
- Vendor space

Can be used for workshops and trainings or rented out for cultural community purposes.

Storage for local farmers to minimize waste, increase longevity of produce, and prepare produce for sales.

The kitchen can be used in conjunction with community events held at HlUMANi, or as a soup kitchen using left-over produce.

To allow for the complex and sales to be managed.

The adjacent farm currently does not have any bathroom facilities.

Allow for volunteers to stay and work at nearby farms.

Create employment opportunities and strengthen local economy.